

CLOVER COMMONS



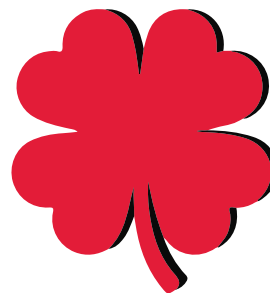
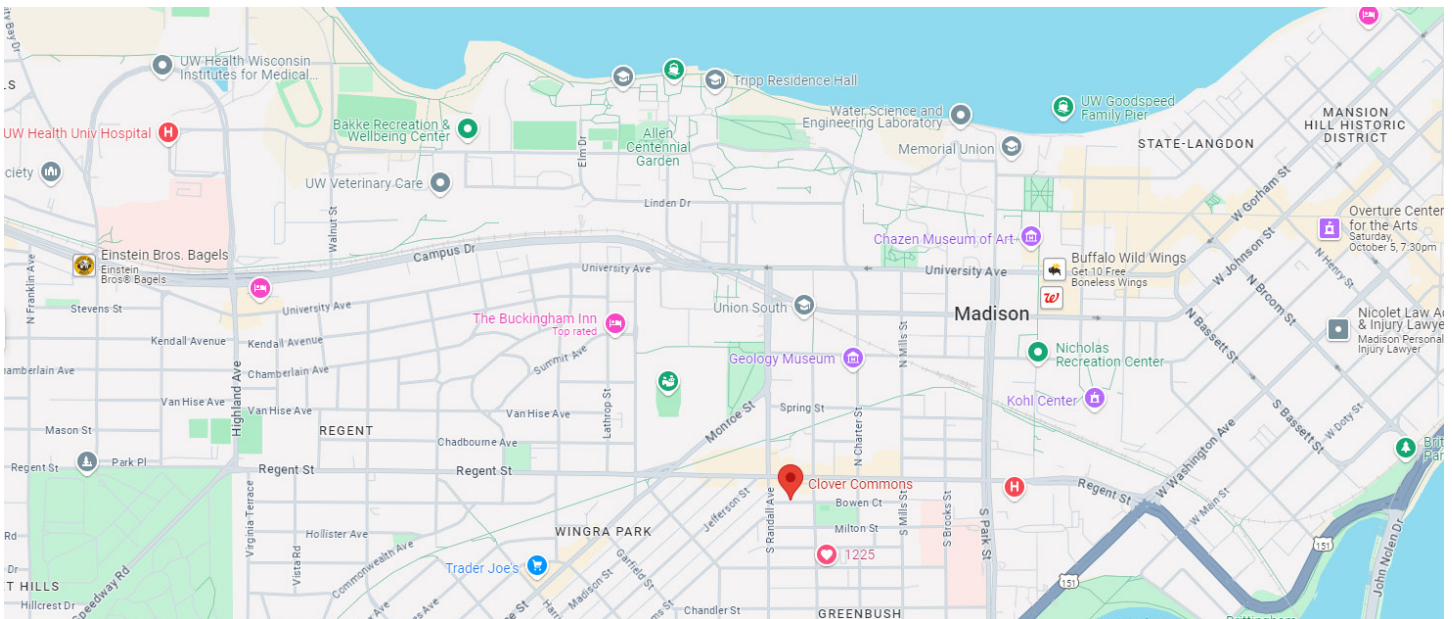
1320 Bowen Court
2025-2026



Welcome

Introducing Clover Commons at 1320 Bowen Court, located atop Lucky's Bar near UW-Madison's vibrant campus. Built in 2023, this modern yet charming apartment offers convenient access to campus life while providing upscale amenities. Enjoy the bustling energy of Regent Street from this unique and centrally located building. This property is only minutes from Camp Randall, UW-Madison's campus, and much more!

Click here to view availability:
[Clover Commons](#)



**CLOVER
COMMONS**

Amenities/Features

Building Features

- Community Room
- Laundry facilities on every floor
- Underground heated garage
- bike racks
- Many great floorplans!

Unit Amenities/Utilities

- All Units are furnished
- Up-to-date appliances
- granite countertops
- easy-to-clean LVP flooring
- Private Balconies on most Units

Living Room Furniture

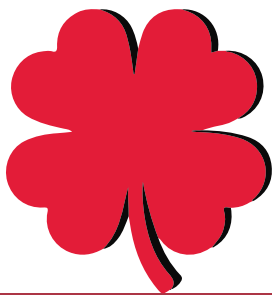
- Two couches
- Coffee table
- Side table

Kitchen Furniture

- Stools at the island

Bedroom Furniture

- Twin bed
- Modular closet space



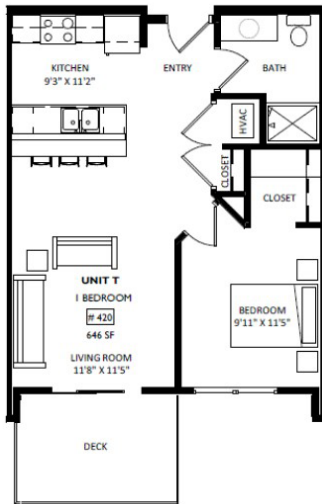
**CLOVER
COMMONS**



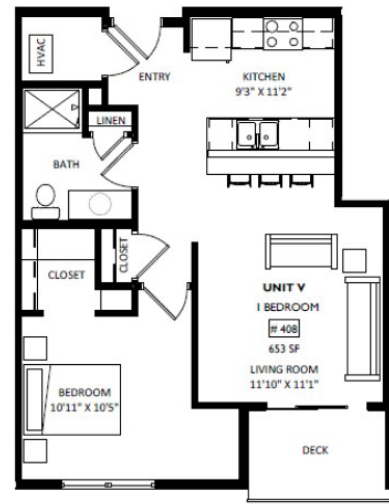


**One Bed
One Bath**

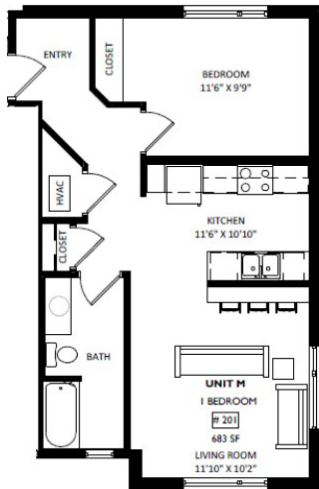
One Bed One Bath



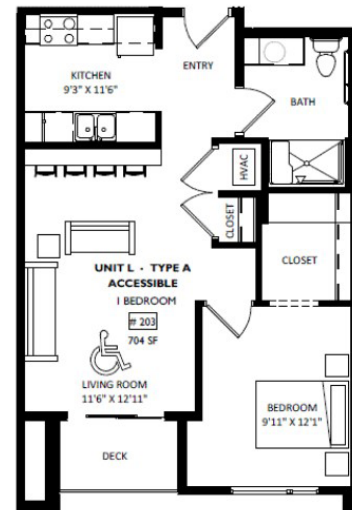
Rooms #416,#420
646Sq Ft



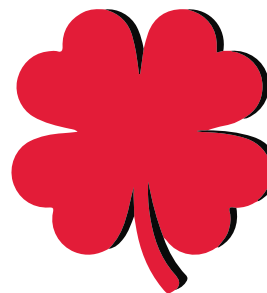
Rooms #408
653 Sq Ft

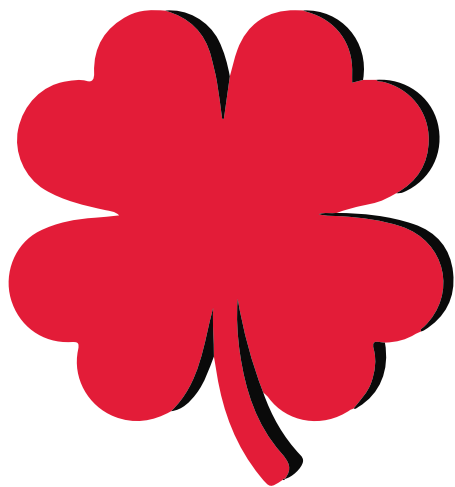


Rooms #201
683 Sq Ft



Rooms #203
704 Sq Ft

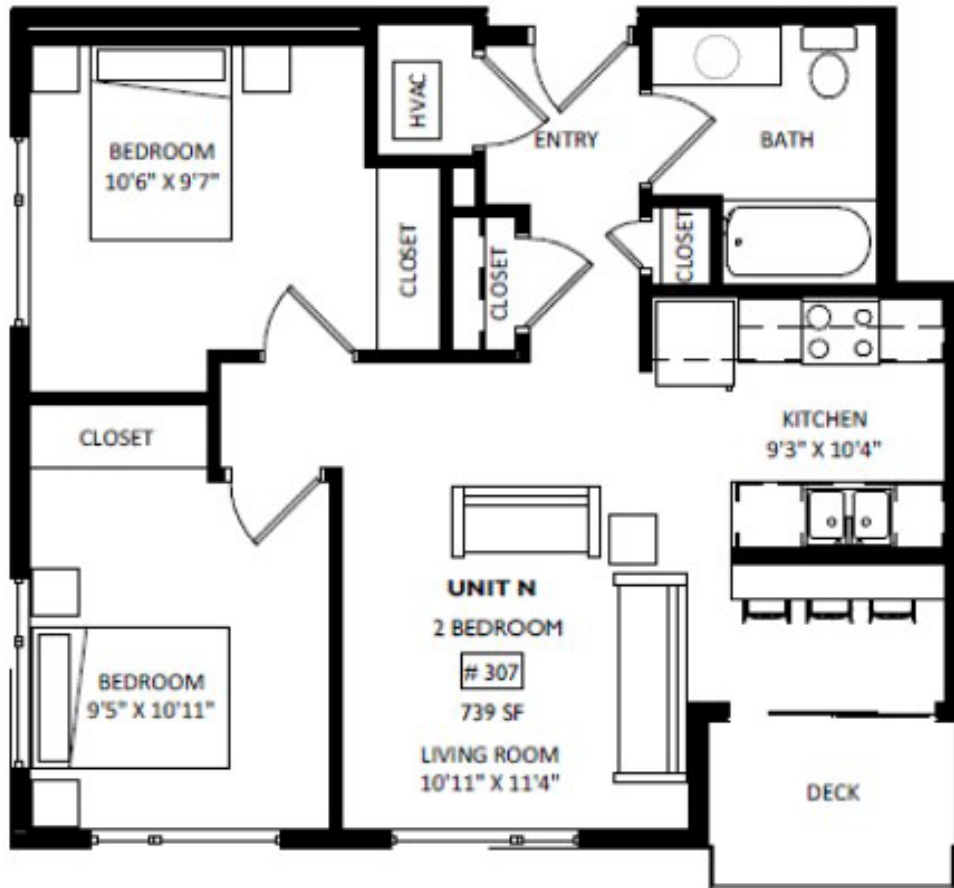




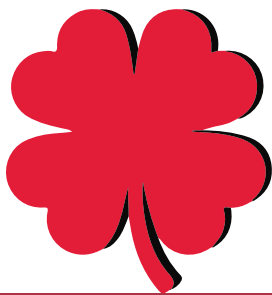
**CLOVER
COMMONS**

**Two Bed
One Bath**

Two Bed One Bath

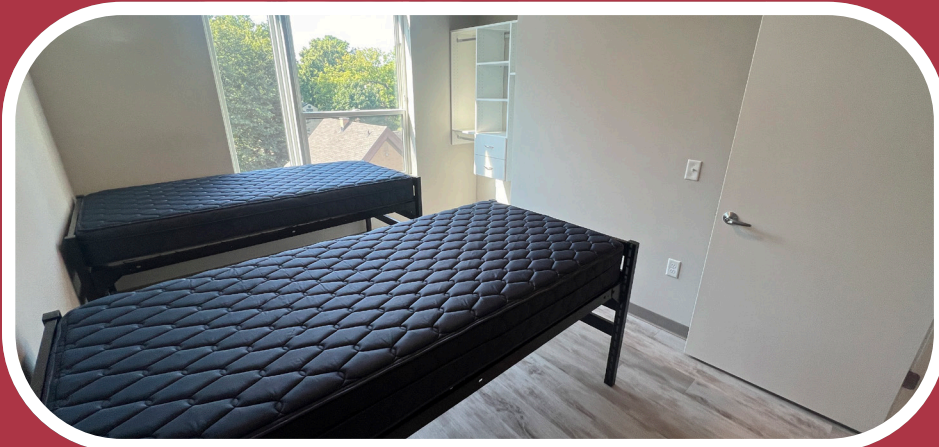


Rooms #307
739 Sq Ft



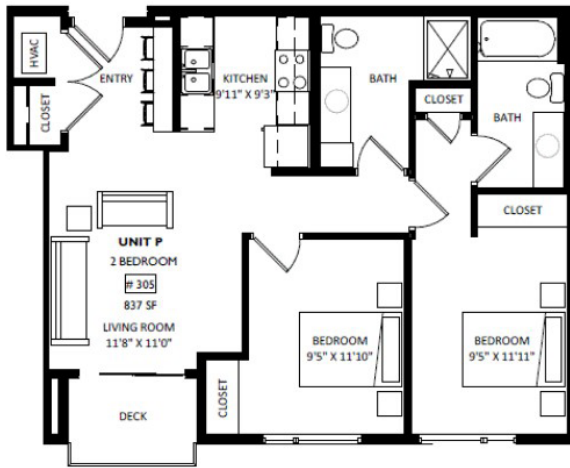
**CLOVER
COMMONS**



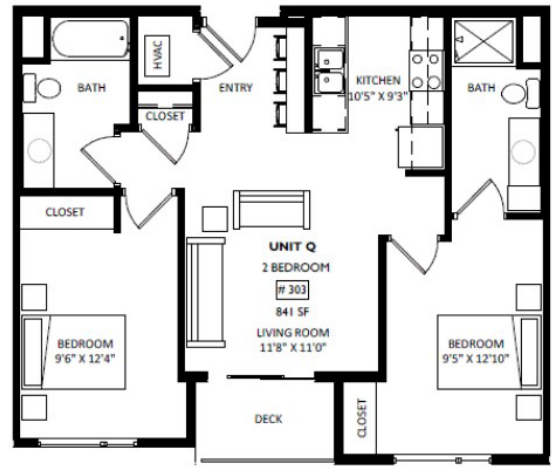


**Two Bed
Two Bath**

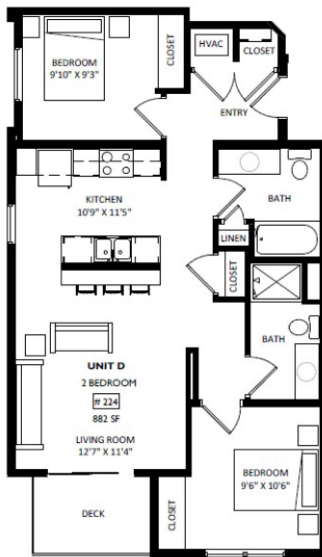
Two Bed Two Bath



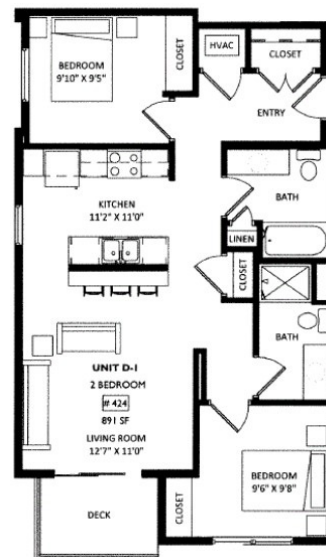
Room #305
837 Sq Ft



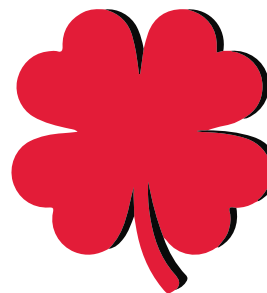
Room #303
841 Sq Ft



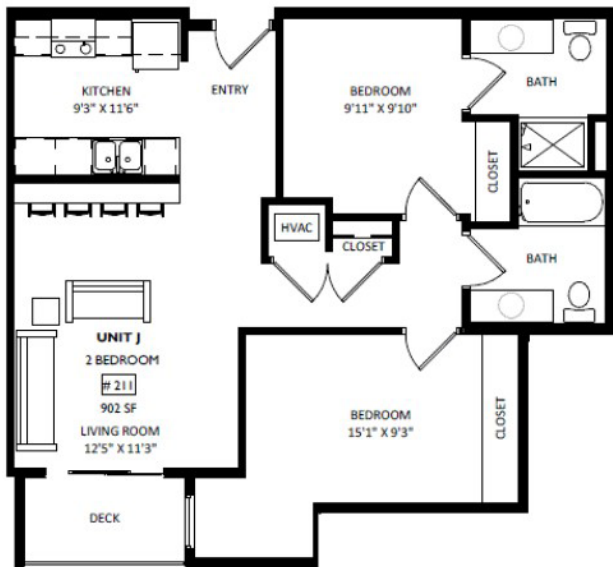
Room #224, #324
882 Sq Ft



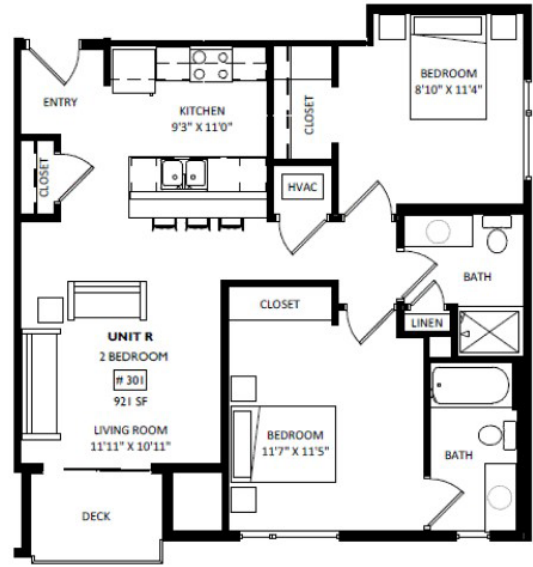
Room #424
891 Sq Ft



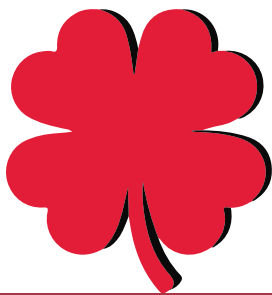
Two Bed Two Bath



Room #311, 411
902 Sq Ft



Room #301
921 Sq Ft

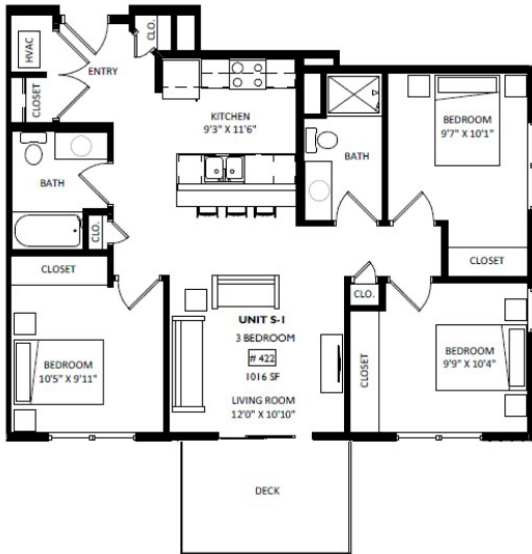


**CLOVER
COMMONS**

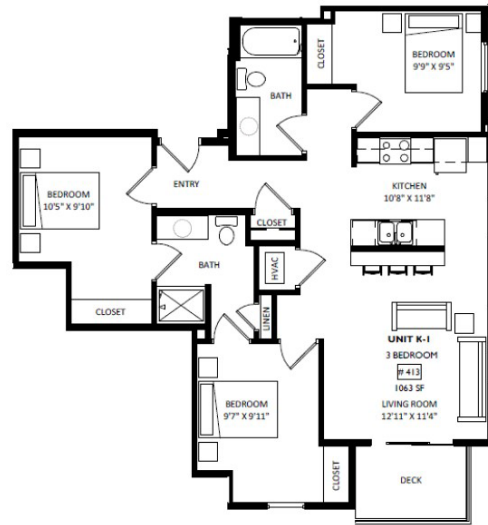
MPM MADISON
PROPERTY
MANAGEMENT INC.

**Three Bed
Two Bath**

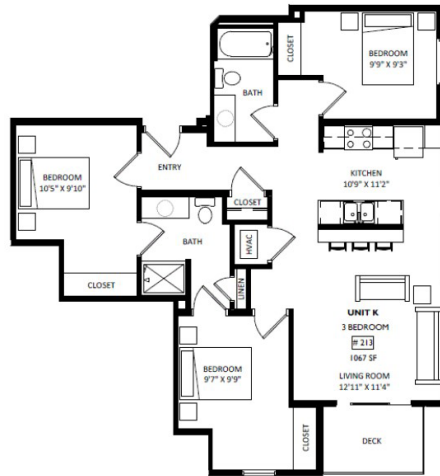
Three Bed Two Bath



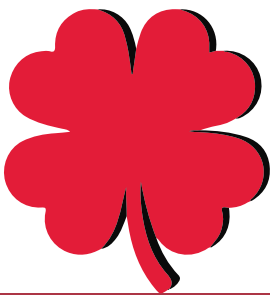
Rooms #414, #422
1,016 Sq Ft



Rooms #413
1,063 Sq Ft

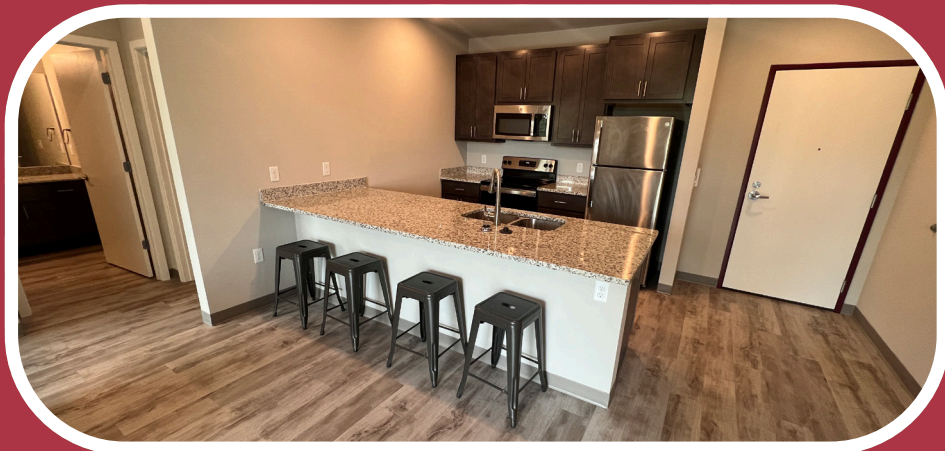


Rooms #213, #313
1,067 Sq Ft



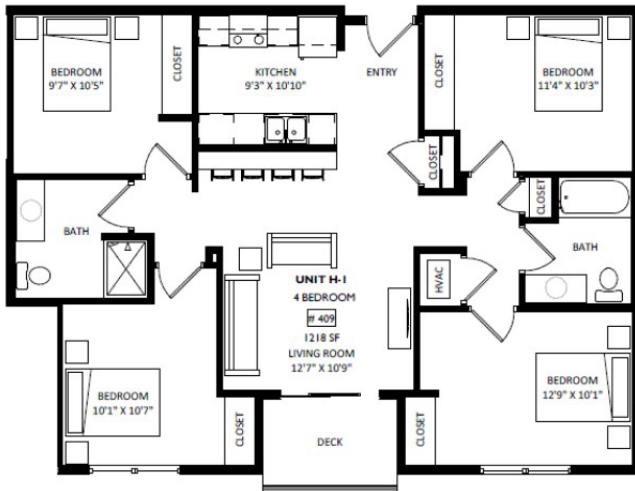
**CLOVER
COMMONS**



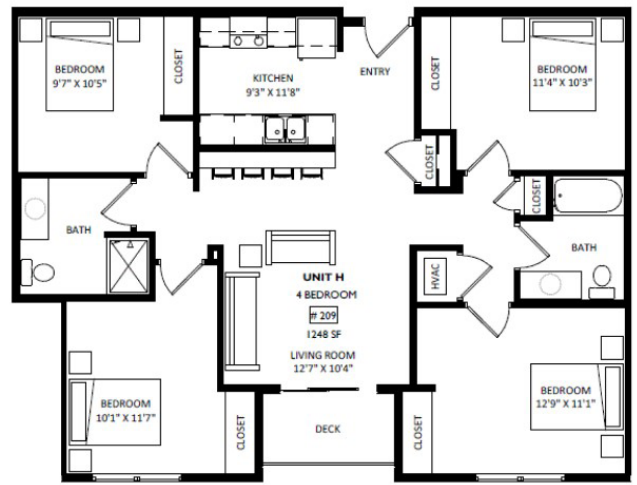


**Four Bed
Two Bath**

Four Bed Two Bath



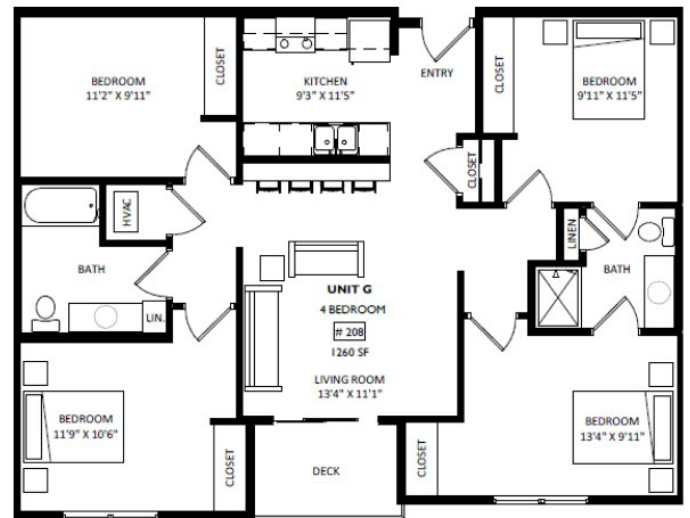
Rooms #409
1,218 Sq Ft



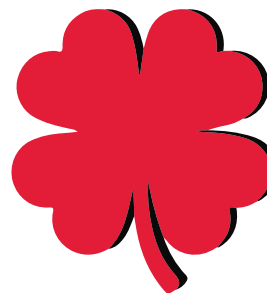
Rooms #209, #309
1,248 Sq Ft



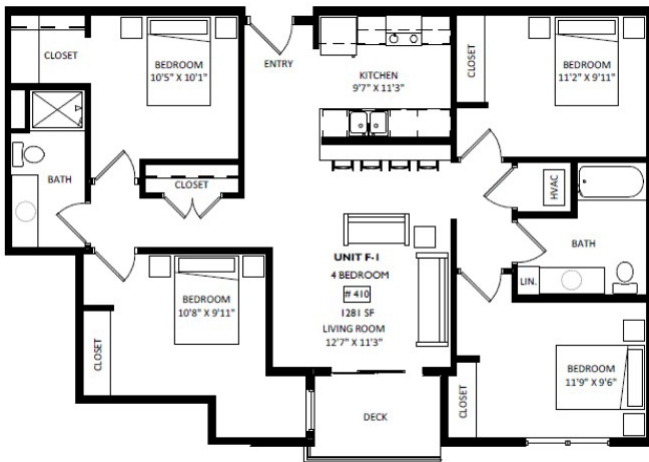
Rooms #214, #222, #314, #322
1,255 Sq Ft



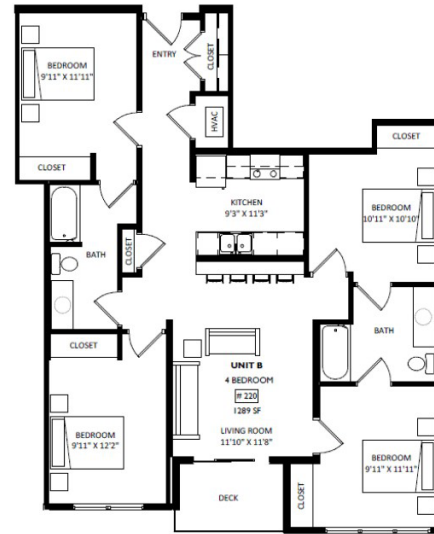
Rooms #208, #308
1,260 Sq Ft



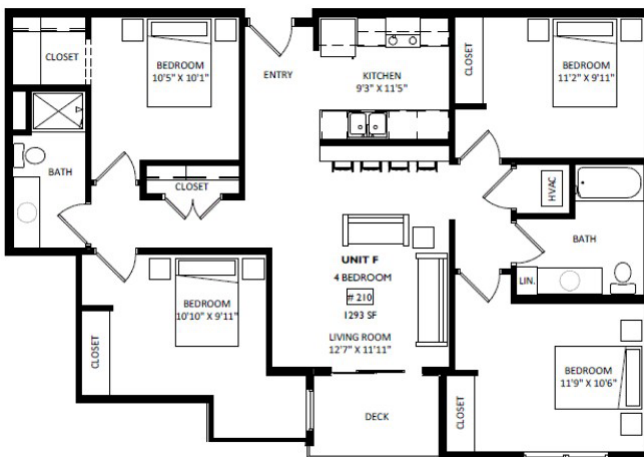
Four Bed Two Bath



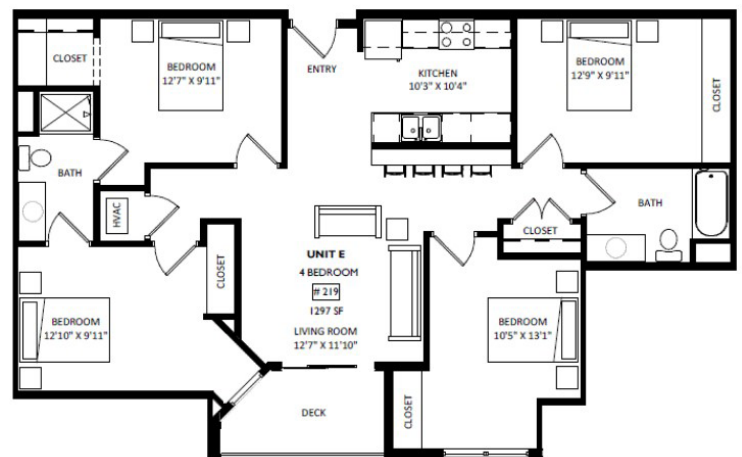
Room #410
1,281 Sq Ft



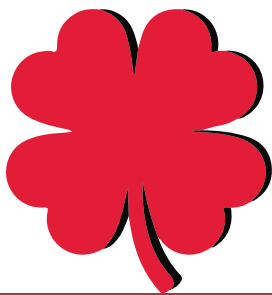
Rooms #216, #220, #316, #320
1,289 Sq Ft



Rooms #210, #310
1,293 Sq Ft



Room #219, #319, #419
1,297 Sq Ft



**CLOVER
COMMONS**

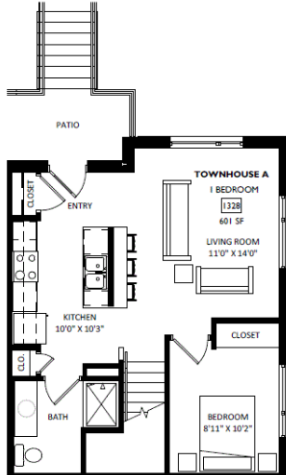
MPM MADISON
PROPERTY
MANAGEMENT INC.



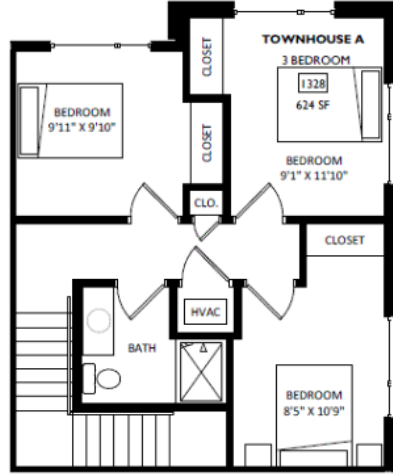
Townhouse

*Utilites & Furnishing might be different. Ask property manager for more details.

Townhouse

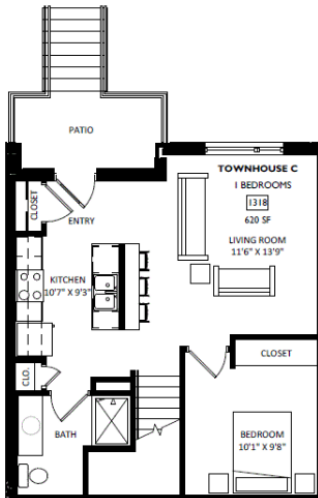


FIRST FLOOR

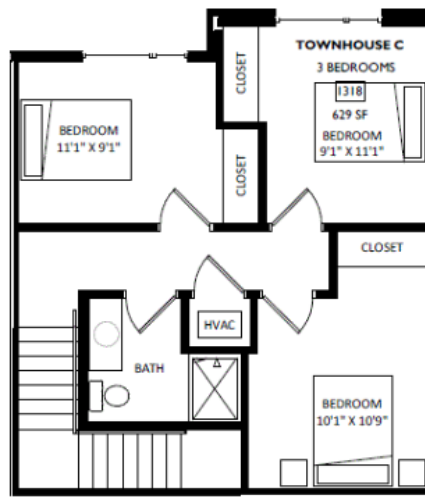


SECOND FLOOR

1328 Bowen Court
1,225 Sq Ft

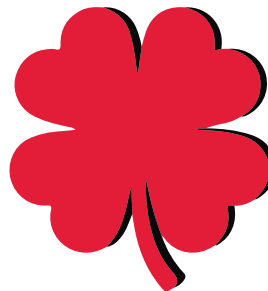


FIRST FLOOR

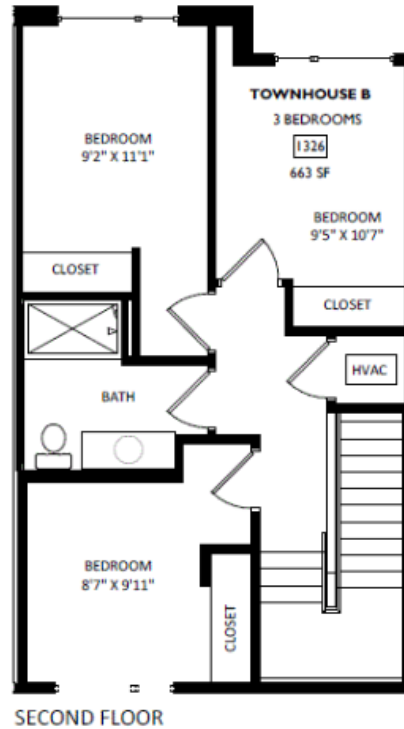
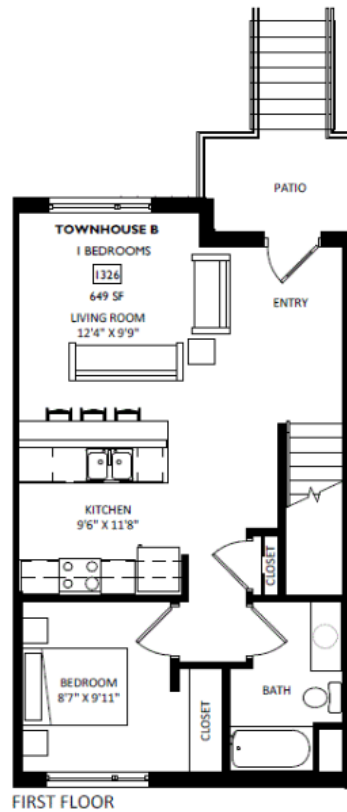


SECOND FLOOR

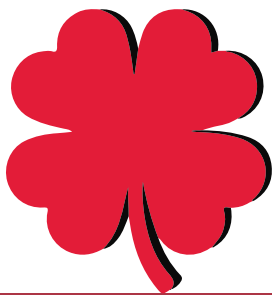
1318 Bowen Court
1,249 Sq Ft



Townhouse

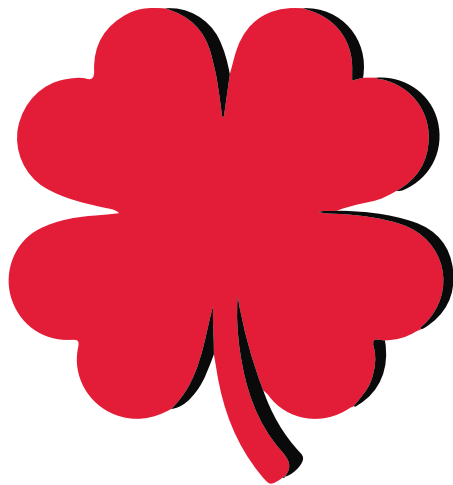


1322 Bowen Court
1324 Bowen Court
1326 Bowen Court
1,312 Sq Ft



**CLOVER
COMMONS**





CLOVER COMMONS

[MPM Website](#)
[Clover Commons Availability](#)

